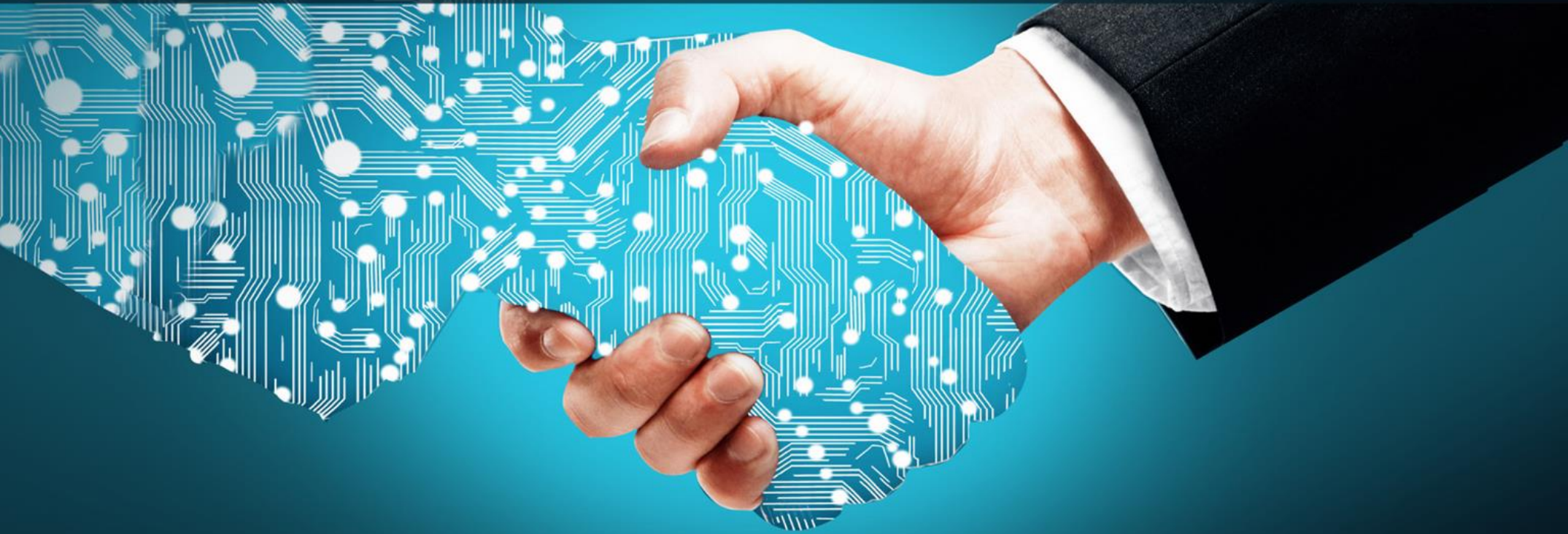


Informatika v javni upravi 2016

"Digitalna preobrazba javne uprave - GaaS"



Kako ponujati storitve javne uprave z uporabo tehnologije API

Kaj je API?

What is a Business API?

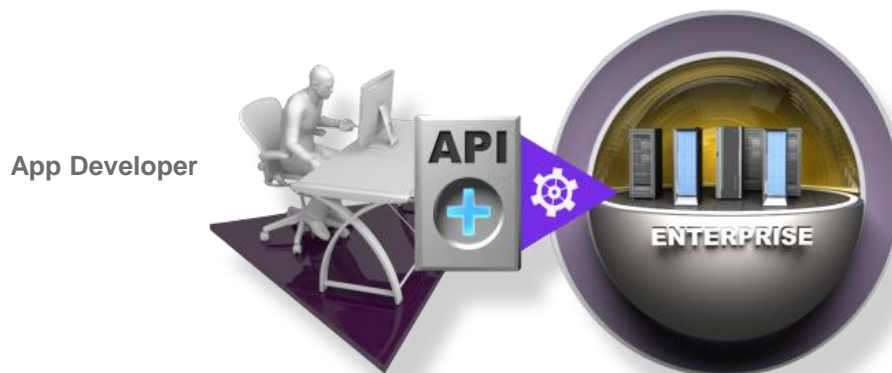
- A Business API is a **public persona** for an enterprise; exposing defined assets, data or services for public consumption
- A Business API is **simple** for app developers to use, access and understand
- A Business API can be easily invoked

What Value Does a Business API Provide?

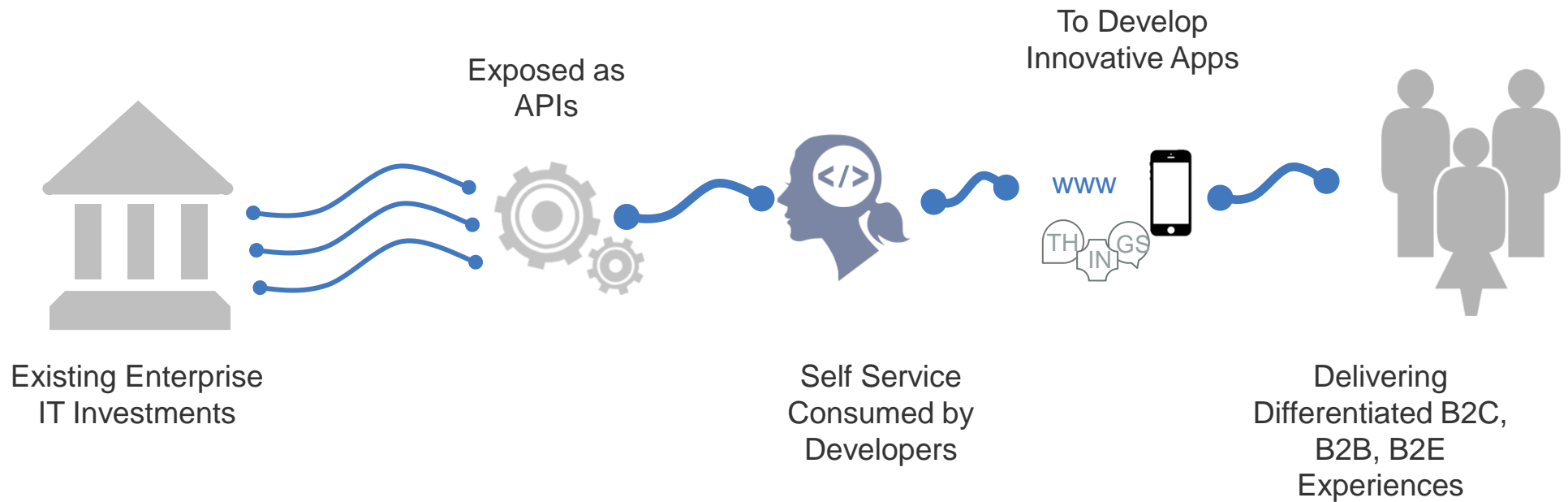
- Extends the enterprise and **opens new markets** by allowing external app developers to easily leverage, publicize and/or aggregate a company's assets for broad-based consumption.

What "assets, data or services" are exposed via a Business API?:

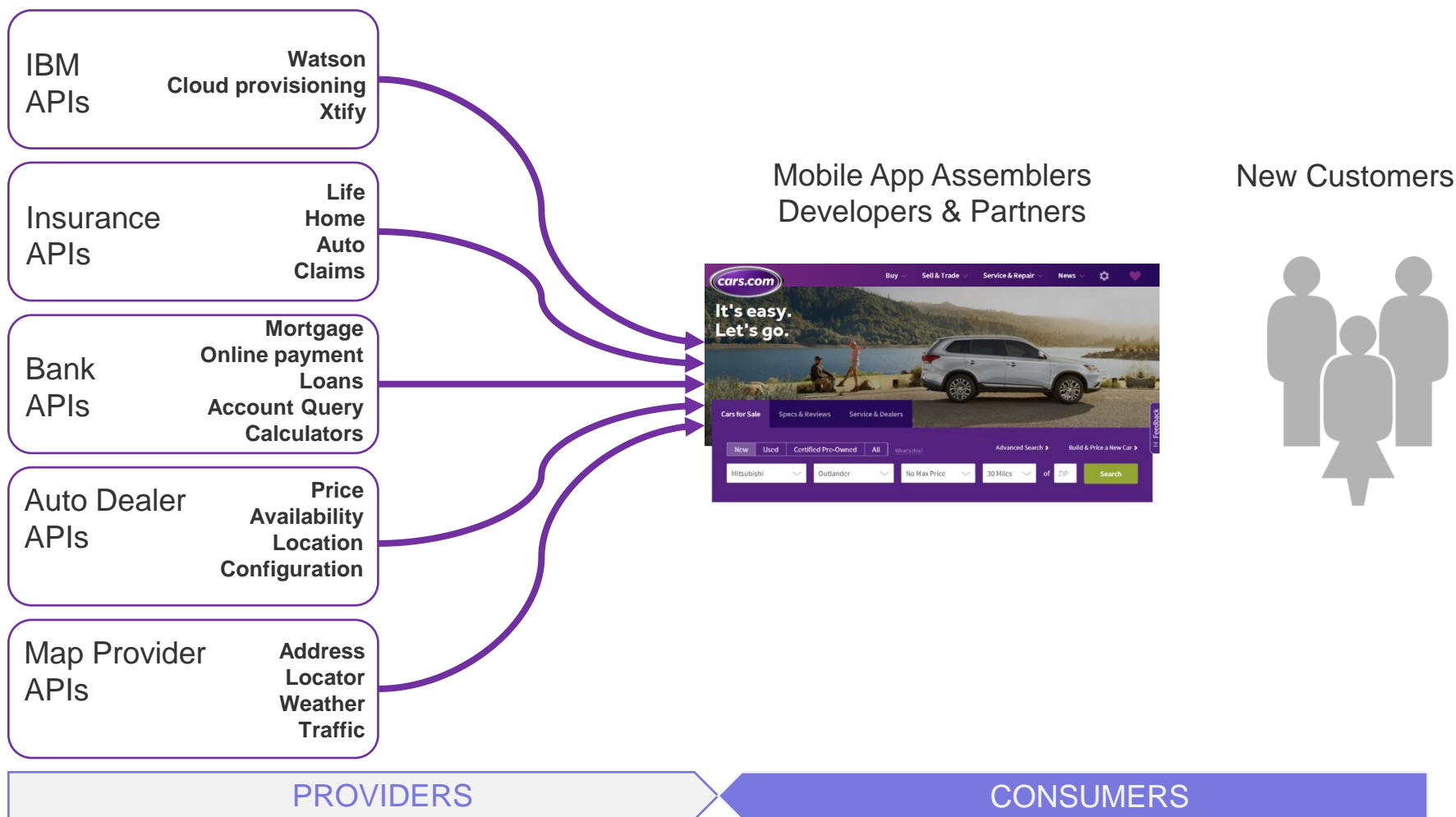
- Product catalogs
- Store listings
- Order status
- Inventory
- Social interaction



Veriga API ekonomije



Primer mobilne aplikacije



Klasifikacija API-jev



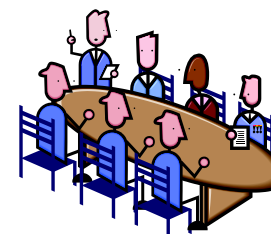
Public, Open-To-All APIs

- APIs are open to any developer who wants to sign up
- Apps are more targeted towards end consumers
- The business driver is to engage customers through external developers



Protected, Open-To-Partner APIs

- APIs are open to select business partners
- Apps could be targeted at end consumers or business users
- The business driver is usually different, based on the data and type of business of the enterprise



Private, Internal APIs

- APIs are exposed only to existing developers within the enterprise
- Apps are usually targeted at employees of the enterprise
- The business driver is more around productivity of employees



Strategija in izzivi

1

Speed application development

Via self service library of reusable APIs



2

Securely expose systems of record

Apps and data to Mobile, IoT, & hybrid cloud apps



3

Publish APIs to expand reach

Tap into developer & partner ecosystems



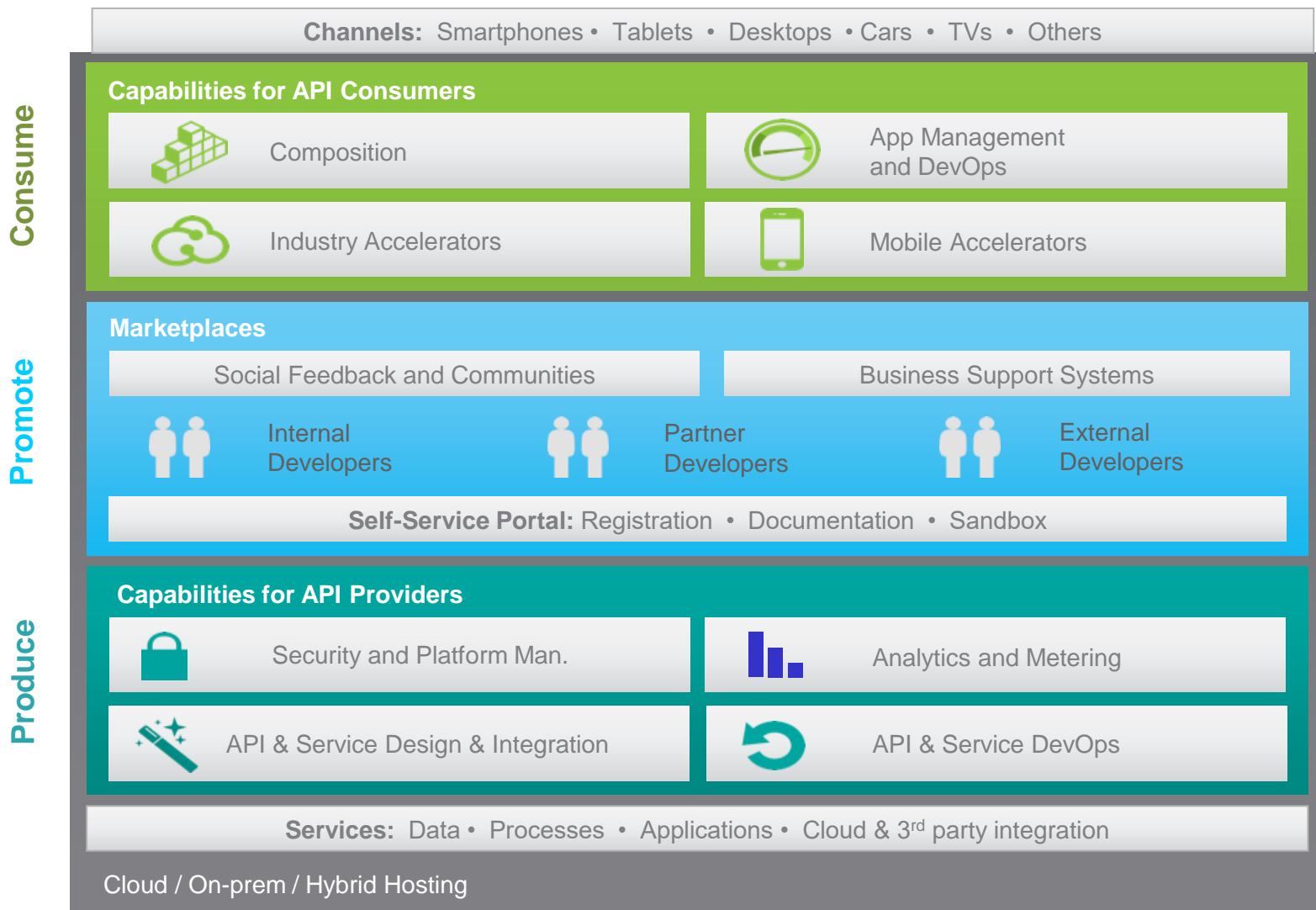
4

Enable new business

Monetize existing and new data & algorithms



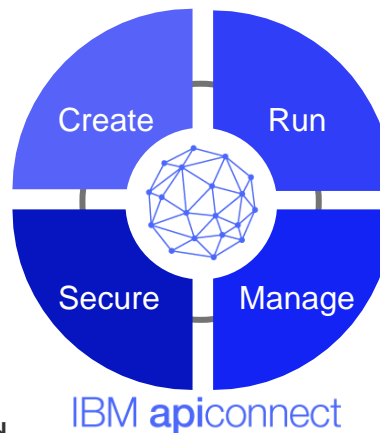
Referenčni model



IBM API Connect

- Rapid model-driven API creation
- Datasource to API mapping automation
- Standards-based visual API spec creation in Swagger 2.0
- Local API creation and testing
- On-cloud & on-premises staging of APIs, Plans & Products

- Policy enforcement
- Enterprise security
- Quota management & rate limiting
- Content-based routing
- Response caching, load-balancing and offload processing
- Message format & transport protocol mediation



- Node.js & Java Microservice runtime
- Node.js & Java integrated runtime management
- Enterprise HA & scaling
- On-cloud & on-premises staging of Microservice applications

- API discovery
- API, Plan & Product policy creation
- API, Plan & Product lifecycle mgmt.
- Self-service, customizable, developer portal
- Advanced Analytics
- Subscription & community mgmt.



Hvala za vašo pozornost !

Vprašanja?

Pripombe?

Predlogi?